



GAT MONTHLY MEMBERSHIP PROGRESS REPORT

Results as of: 1/31/2022

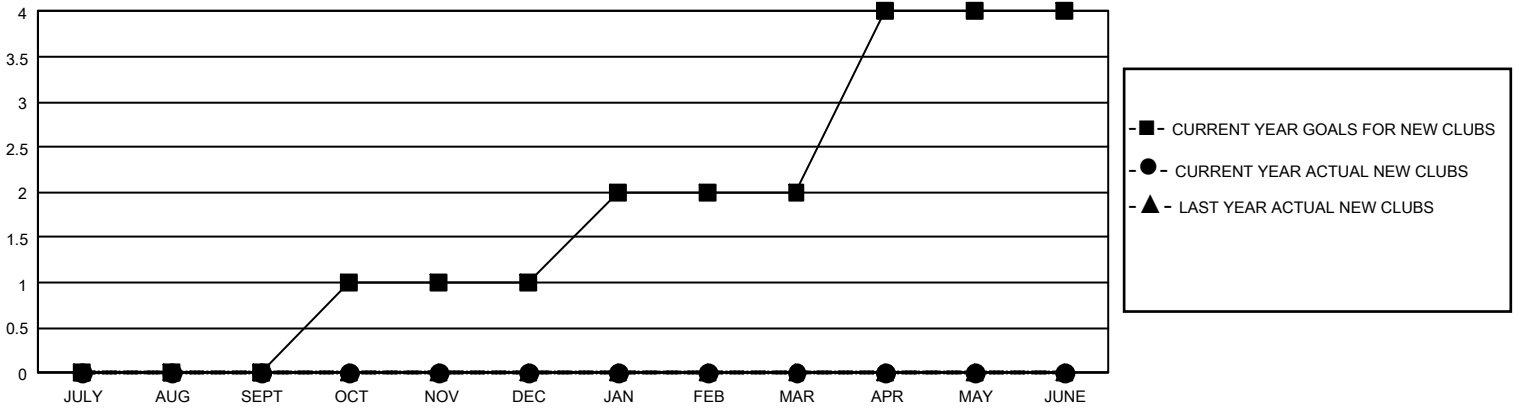
GMT Constitutional Area 8, Group C

REPORT DOES NOT INCLUDE CLUBS IN UNDISTRICTED AREAS.

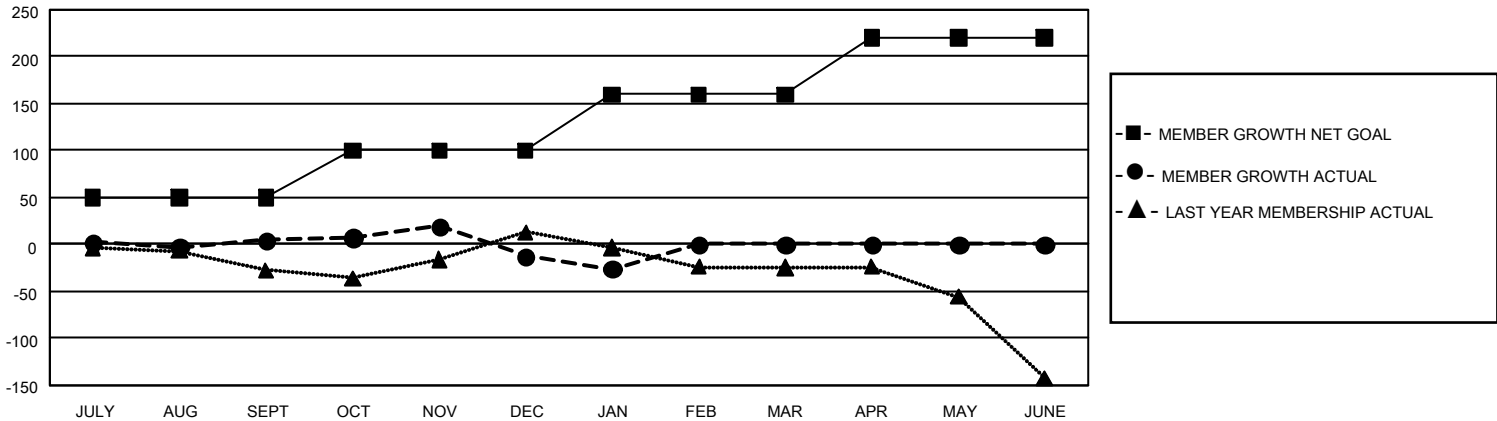
| Clubs | | | |
|-----------------------|---------------|-----------|---------------|
| RESULTS FOR 2021-2022 | | | |
| QUARTER | NEW CLUB GOAL | NEW CLUBS | DROPPED CLUBS |
| JULY/AUG/SEPT | 0 | 0 | 4 |
| OCT/NOV/DEC | 3 | 0 | 0 |
| JAN/FEB/MAR | 3 | 0 | 0 |
| APR/MAY/JUNE | 6 | 0 | 0 |

| Members | | | |
|-----------------------|------------------------|----------------------|--|
| RESULTS FOR 2021-2022 | | | |
| QUARTER | MEMBER GROWTH NET GOAL | MEMBER GROWTH ACTUAL | DROPPED MEMBERS ACTUAL (including transfers) |
| JULY/AUG/SEPT | 50 | 65 | 50 |
| OCT/NOV/DEC | 50 | 86 | 94 |
| JAN/FEB/MAR | 60 | 14 | 20 |
| APR/MAY/JUNE | 60 | 0 | 0 |

GOALS AND ACTUAL NEW CLUBS CUMULATIVE



GOALS AND ACTUAL MEMBERS CUMULATIVE



| | | | |
|--|---|--|-------------------------------------|
| DROPPED CLUBS: 4 | 59 CLUBS OF 126 ADDED 1 OR MORE NEW MEMBERS | <u>GENDER DISTRIBUTION</u> | |
| | | MALE 1,030 (53.48%) FEMALE 896 (46.52%) NON BINARY 0 (0.00%) PREFER NOT TO ANSWER 0 (0.00%) | |
| <u>DROPPED MEMBERS</u> | | CLICK HERE FOR CUMULATIVE MEMBERSHIP DATA | TOTAL FAMILY UNIT MEMBERS 510 |
| DECEASED 17 CLUB CANCELLED 0 OTHER 147 TOTAL 164 | | | FAMILY MEMBERS PAYING HALF DUES 264 |